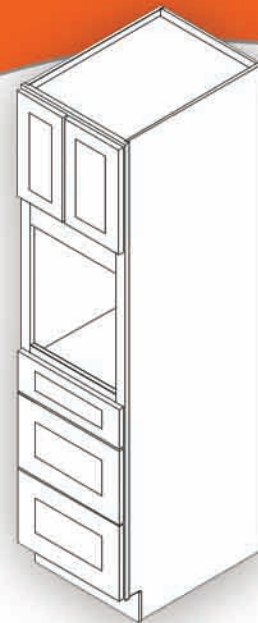


Single Oven Cabinet

Step-by-Step Assembly Instructions

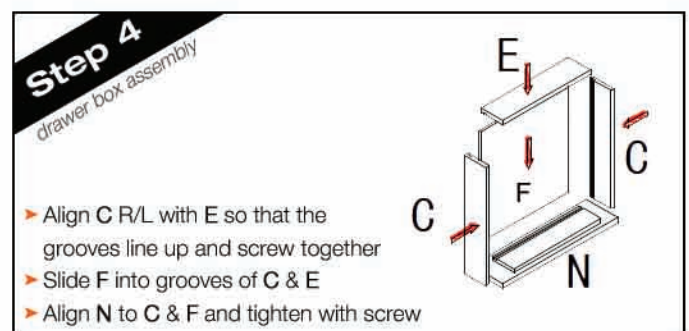
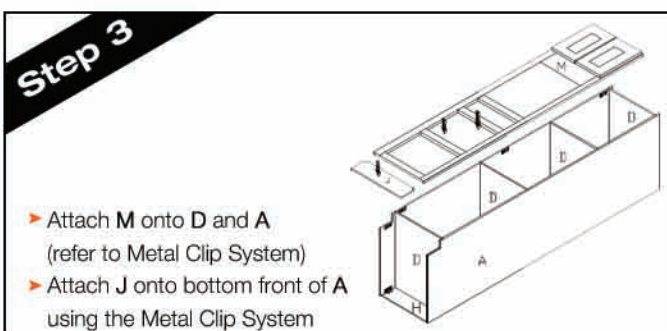
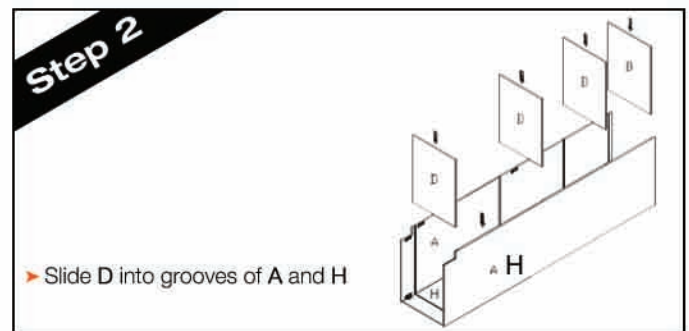
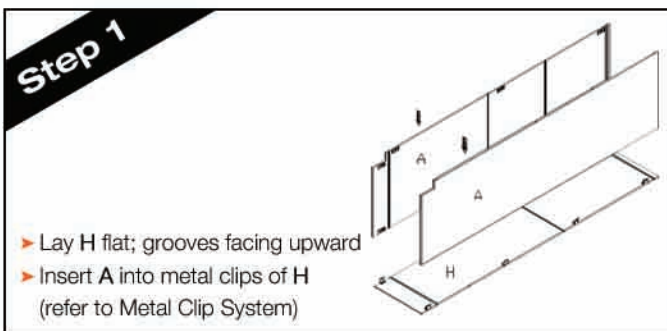


| Code | Item | Qty |
|------|------------------------|-----|
| A | R/L SIDE PANEL | 2 |
| D | BOTTOM PANEL | 4 |
| E | DRAWER FRONT PANEL | 3 |
| F | DRAWER BOTTOM PANEL | 3 |
| H | BACK PANEL | 1 |
| J | TOE KICK PLATE | 1 |
| K | DRAWER GLIDE - CABINET | 6 |
| L | DRAWER GLIDE - DRAWER | 6 |
| M | FRONT FACE | 1 |
| N | DRAWER FRONT PANEL | 3 |
| T | REAR SLIDE BRACKET | 6 |



**-Easy Assembly-
Metal Clip
System
-Easy Assembly-**

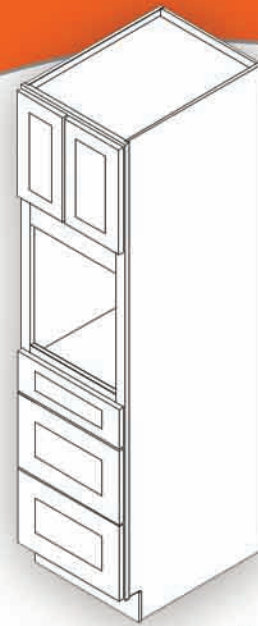
- ▶ Align clips **1** and **2**
- ▶ Slide **1** into **2**
- ▶ Insert locking screw into clip pair
- ▶ Tighten all screws



Flip this page for steps 5-7 →

Single Oven Cabinet

Step-by-Step Assembly Instructions



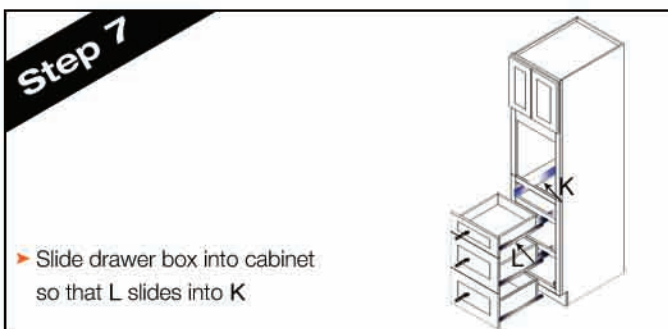
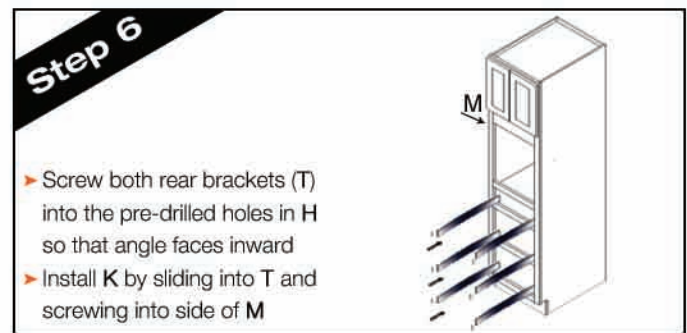
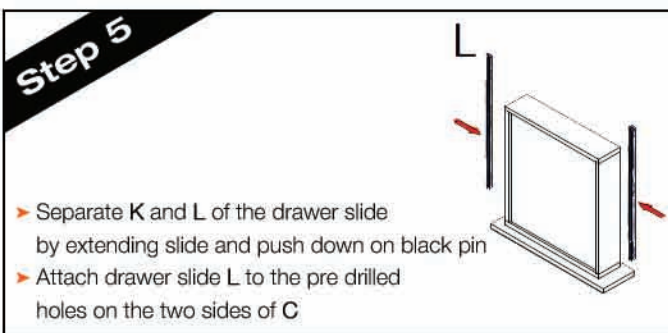
| Code | Item | Qty |
|------|------------------------|-----|
| A | R/L SIDE PANEL | 2 |
| D | BOTTOM PANEL | 4 |
| E | DRAWER FRONT PANEL | 3 |
| F | DRAWER BOTTOM PANEL | 3 |
| H | BACK PANEL | 1 |
| J | TOE KICK PLATE | 1 |
| K | DRAWER GLIDE - CABINET | 6 |
| L | DRAWER GLIDE - DRAWER | 6 |
| M | FRONT FACE | 1 |
| N | DRAWER FRONT PANEL | 3 |
| T | REAR SLIDE BRACKET | 6 |

-Easy Assembly-
Metal Clip System
-Easy Assembly-



- ▶ Align clips **1** and **2**
- ▶ Slide **1** into **2**

- ▶ Insert locking screw into clip pair
- ▶ Tighten all screws



Flip this page for steps 1-4 →