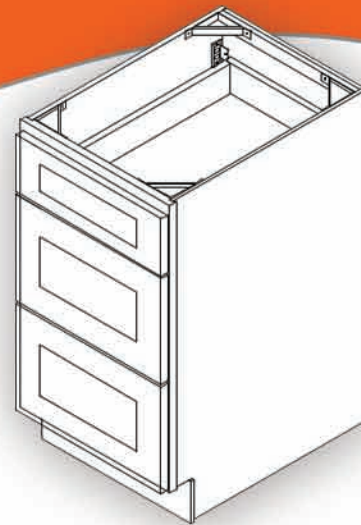
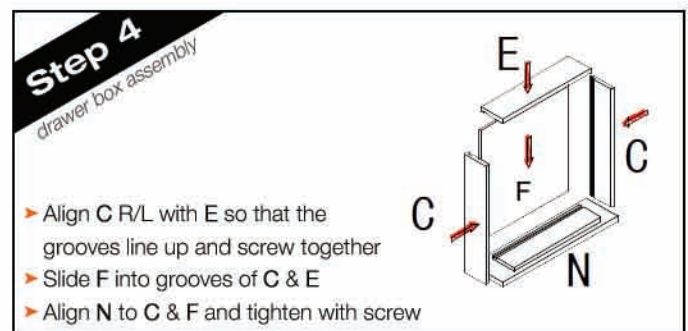
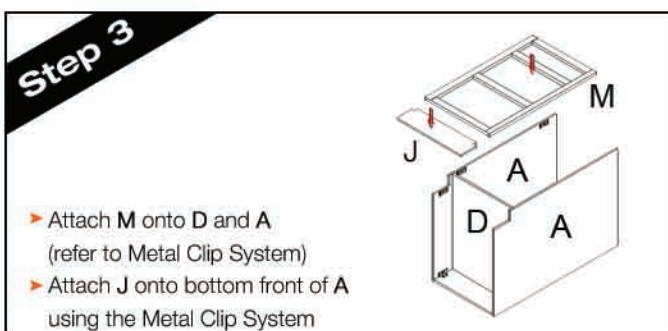
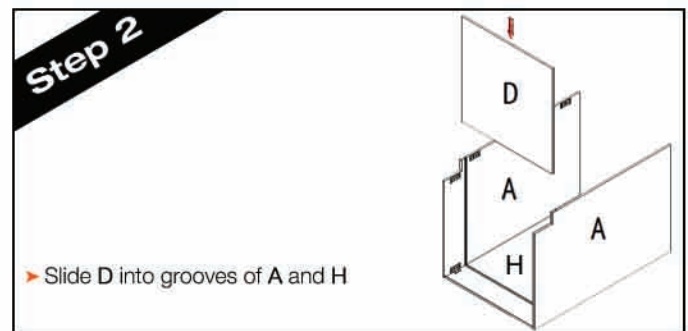
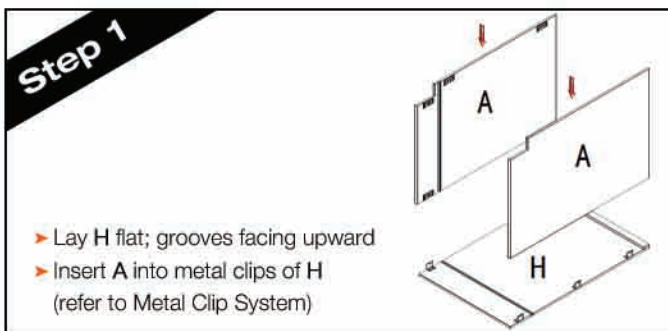


Drawer Base Cabinet

Step-by-Step Assembly Instructions



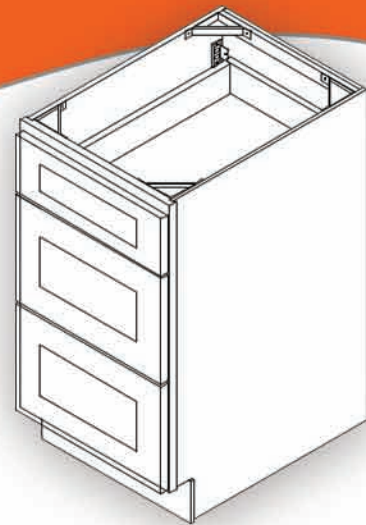
Code	Item	Qty
A	R/L SIDE PANEL	2
C	DRAWER L/R SIDE PANEL	6
D	BOTTOM PANEL	1
E	DRAWER BACK PANEL	3
F	DRAWER BOTTOM PANEL	3
H	BACK PANEL	1
J	TOE KICK PLATE	1
K	DRAWER GLIDE-CABINET	6
L	DRAWER GLIDE-DRAWER	6
M	FRONT FACE	1
N	DRAWER FRONT PANEL	3
T	REAR SLIDE BRACKET	6



Flip this page for steps 5-7 →

Drawer Base Cabinet

Step-by-Step Assembly Instructions



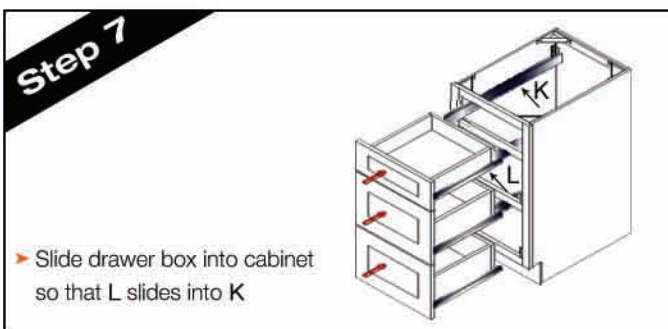
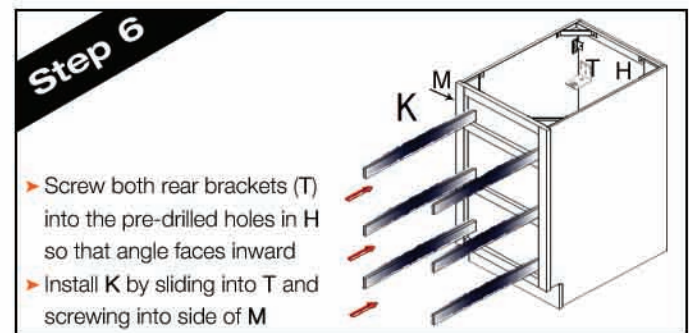
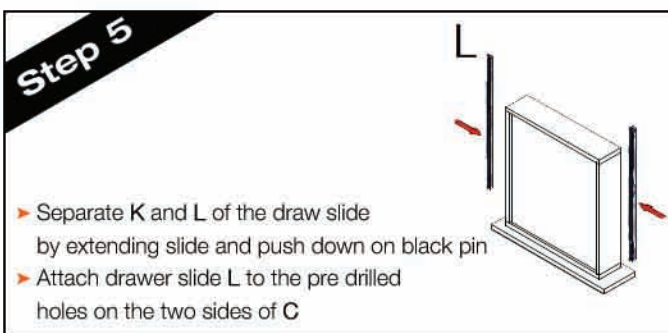
Code	Item	Qty
A	R/L SIDE PANEL	2
C	DRAWER L/R SIDE PANEL	6
D	BOTTOM PANEL	1
E	DRAWER BACK PANEL	3
F	DRAWER BOTTOM PANEL	3
H	BACK PANEL	1
J	TOE KICK PLATE	1
K	DRAWER GLIDE-CABINET	6
L	DRAWER GLIDE-DRAWER	6
M	FRONT FACE	1
N	DRAWER FRONT PANEL	3
T	REAR SLIDE BRACKET	6

-Easy Assembly-
Metal Clip System
-Easy Assembly-



- ▶ Align clips **1** and **2**
- ▶ Slide **1** into **2**

- ▶ Insert locking screw into clip pair
- ▶ Tighten all screws



Flip this page for steps 1-4 →