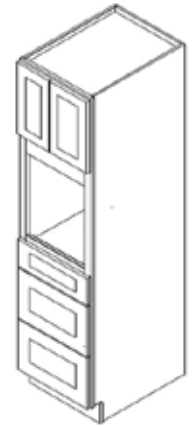


SINGLE OVEN CABINET (PA)

ASSEMBLY INSTRUCTIONS

CODE	ITEM	QTY
A	Right Left Side Panel	2
D	Bottom Panel	4
E	Drawer Front Panel	3
F	Drawer Bottom Panel	3
H	Back Panel	1
J	Toe Kick Panel	1
K	Drawer Glide - Cabinet	6
L	Drawer Glide - Drawer	6
M	Front Face	1
N	Drawer Front Panel	3
T	Rear Slide Bracket	6



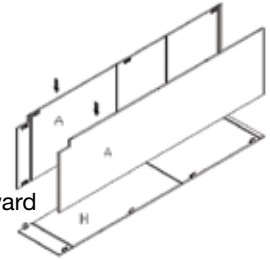
EASY ASSEMBLY METAL CLIP SYSTEM



- Align Clips ① and ②
- Slide ① into ②
- Insert locking screw into clip pair
- Tighten all screws

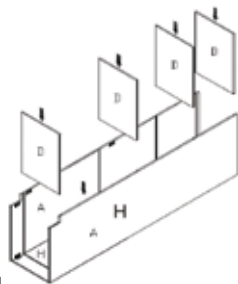
STEP 1

- Lay H flat; grooves facing upward
- Insert A into metal clips of H (refer to Metal Clip System)



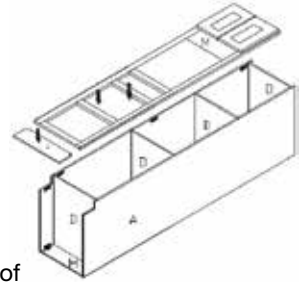
STEP 2

- Slide D into grooves of A and H



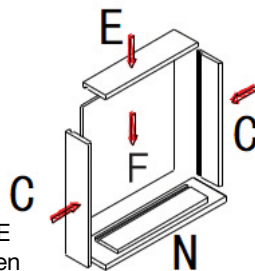
STEP 3

- Attach M onto D and A (refer to Metal Clip System)
- Attach J onto bottom front of A using the Metal Clip System



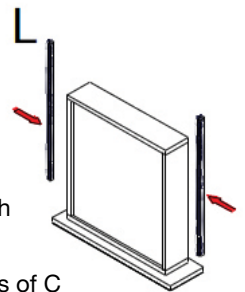
STEP 4

- Align C Right | Left with E so that the grooves line up and screw together
- Slide F into grooves of C and E
- Align N into C and F and tighten with screw



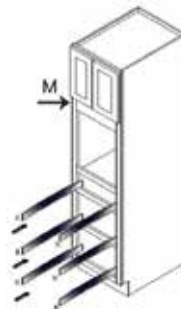
STEP 5

- Separate K and L of the drawer slide by extending slide and push down on black pin
- Attach drawer slide L to the pre-drilled holes on the two sides of C



STEP 6

- Screw both rear brackets T into the pre-drilled holes in H so that angle faces inward
- Install K by sliding into T and screwing into side of M



STEP 7

- Slide drawer box into cabinet so L slides into K

